

Mechanical Installation Planning

Drive Dimensions

Enclosures of standard products vary depending on the model. Refer to the tables and diagrams below.

Enclosure Panel [NEMA Type 1] Diagram

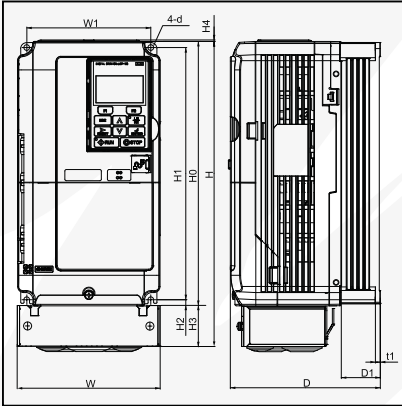


Figure 1

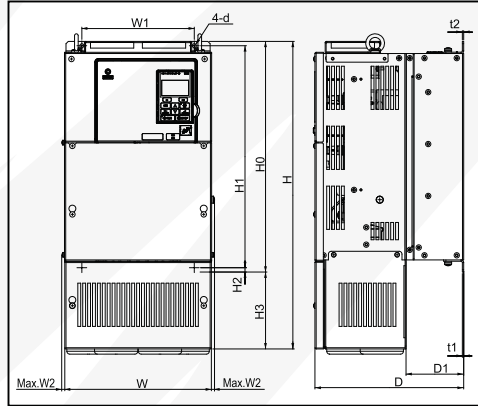


Figure 2

Note: Drives with NEMA Type 1 Enclosures can be converted to protected chassis by removing the top and bottom covers. The H3 dimension would be eliminated and the overall height of the drive would become H0.

Open-Chassis [IP00] Diagram

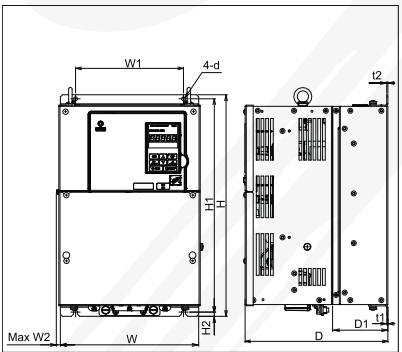


Figure 3

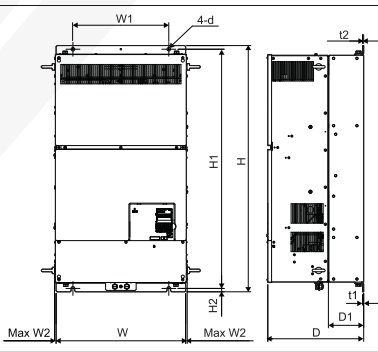


Figure 4

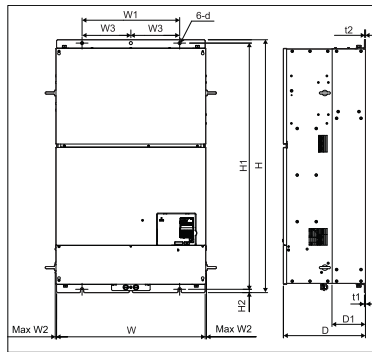


Figure 5

240V Class

Diagram	Model CIMR-AU2A□□□□	Max. Applicable Motor Capacity (HP)		Fig.	Dimensions (in.)													Weight (lb)	
		Normal Duty	Heavy Duty		W	H	D	W1	W2	H0	H1	H2	H3	H4	D1	t1	t2		d
NEMA Type 1	0004	0.75	0.75	1	5.51	11.81	5.79	4.80	-	10.24	9.76	0.24	1.57	0.06	1.50	0.20	-	M5	7.3
	0006	1.5	1		5.51	11.81	5.79	4.80	-	10.24	9.76	0.24	1.57	0.06	1.50	0.20	-		7.3
	0008	2	2		5.51	11.81	5.79	4.80	-	10.24	9.76	0.24	1.57	0.06	1.50	0.20	-		7.5
	0010	3	2		5.51	11.81	5.79	4.80	-	10.24	9.76	0.24	1.57	0.06	1.50	0.20	-		7.5
	0012	3	3		5.51	11.81	5.79	4.80	-	10.24	9.76	0.24	1.57	0.06	1.50	0.20	-		7.5
	0018	5	3		5.51	11.81	6.46	4.80	-	10.24	9.76	0.24	1.57	0.06	2.17	0.20	-		8.2
	0021	7.5	5		5.51	11.81	6.46	4.80	-	10.24	9.76	0.24	1.57	0.06	2.17	0.20	-		8.2
	0030	10	7.5		5.51	11.81	6.57	4.80	-	10.24	9.76	0.24	1.57	0.06	2.17	0.20	-		9.3
	0040	15	10		5.51	11.81	6.57	4.80	-	10.24	9.76	0.24	1.57	0.06	2.17	0.20	-		9.3
	0056	20	15		7.09	13.39	7.36	6.30	-	11.81	11.18	0.31	1.57	0.06	2.95	0.20	-		13.0
	0069	25	20		8.66	15.75	7.76	7.56	-	13.78	13.19	0.31	1.97	0.06	3.07	0.20	-		20.1
	0081	30	25		8.66	15.75	7.76	7.56	-	13.78	13.19	0.31	1.97	0.06	3.07	0.20	-		22.0
	0110	40	30		10.00	21.02	10.16	7.68	0.31	15.75	15.16	0.30	5.28	-	3.94	0.09	0.09		50.7
	0138	50	40		10.98	24.17	10.16	8.66	0.31	17.72	17.13	0.30	6.46	-	3.94	0.09	0.09		61.7
	0169	60	50		12.95	28.74	11.14	10.24	0.31	21.65	21.06	0.30	7.09	-	4.33	0.09	0.09		90.4
0211	75	60	12.95	28.74	11.14	10.24	0.31	21.65	21.06	0.30	7.09	-	4.33	0.09	0.09	92.6			
Protected Chassis	0250	100	75	3	17.72	27.76	12.99	12.80	0.39	N/A	26.77	0.49	N/A	N/A	5.12	0.13	0.13	M10	167.6
	0312	125	100		17.72	27.76	12.99	12.80	0.39	N/A	26.77	0.49	N/A	N/A	5.12	0.13	0.13	M10	176.4
	0360	150	125		19.69	31.50	13.78	14.57	0.39	N/A	30.43	0.51	N/A	N/A	5.12	0.18	0.18	M12	216.1
	0415	175	150		19.69	31.50	13.78	14.57	0.39	N/A	30.43	0.51	N/A	N/A	5.12	0.18	0.18	M12	218.3

480V Class

Diagram	Model CIMR-AU4A □□□□	Max. Applicable Motor Capacity (HP)		Fig.	Dimensions (in.)															Weight (lb)	
		Normal Duty	Heavy Duty		W	H	D	W1	W2	W3	H0	H1	H2	H3	H4	D1	t1	t2	d		
NEMA Type 1	0002	1	0.75	1	5.51	11.81	5.79	4.80	-	-	10.24	9.76	0.24	1.57	0.06	1.50	0.20	-	M5	7.5	
	0004	2	2		5.51	11.81	5.79	4.80	-	-	10.24	9.76	0.24	1.57	0.06	1.50	0.20	-		7.5	
	0005	3	3		5.51	11.81	5.79	4.80	-	-	10.24	9.76	0.24	1.57	0.06	1.50	0.20	-		7.5	
	0007	3	3		5.51	11.81	6.46	4.80	-	-	10.24	9.76	0.24	1.57	0.06	2.17	0.20	-		7.9	
	0009	5	5		5.51	11.81	6.46	4.80	-	-	10.24	9.76	0.24	1.57	0.06	2.17	0.20	-		8.2	
	0011	7.5	5		5.51	11.81	6.46	4.80	-	-	10.24	9.76	0.24	1.57	0.06	2.17	0.20	-		8.2	
	0018	10	7.5/10		5.51	11.81	6.57	4.80	-	-	10.24	9.76	0.24	1.57	0.06	2.17	0.20	-		9.0	
	0023	15	10		5.51	11.81	6.57	4.80	-	-	10.24	9.76	0.24	1.57	0.06	2.17	0.20	-		9.0	
	0031	20	15		7.09	13.39	6.57	6.30	-	-	11.81	11.18	0.31	1.57	0.06	2.17	0.20	-		12.6	
	0038	25	20		7.09	13.39	7.36	6.30	-	-	11.81	11.18	0.31	1.57	0.06	2.95	0.20	-		13.2	
	0044	30	25/30		8.66	15.75	7.76	7.56	-	-	13.78	13.19	0.31	1.97	0.06	3.07	0.20	-		19.2	
	0058	40	30		10.00	21.02	10.16	7.68	0.31	-	15.75	15.16	0.30	2.56	-	3.94	0.09	0.09		50.7	
	0072	50	40		10.98	24.17	10.16	8.66	0.31	-	17.72	17.13	0.30	2.56	-	3.94	0.09	0.09		59.5	
	0088	60	50/60		12.95	28.74	10.16	10.24	0.31	-	20.08	19.49	0.30	4.72	-	4.13	0.09	0.13		86.0	
	0103	75	60		12.95	28.74	10.16	10.24	0.31	-	20.08	19.49	0.30	4.72	-	4.13	0.09	0.13		86.0	
	0139	100	75		12.95	28.74	11.14	10.24	0.31	-	21.65	21.06	0.30	7.09	-	4.33	0.09	0.09		99.2	
0165	125	100	12.95	28.74	11.14	10.24	0.31	-	21.65	21.06	0.30	7.09	-	4.33	0.09	0.09	101.4				
Protected Chassis	0208	150	125/150	3	17.72	27.76	12.99	12.80	0.39	-	-	26.77	0.49	-	-	5.12	0.13	0.13	M10	174.2	
	0250	200	150		19.69	31.50	13.78	14.57	0.39	-	-	30.43	0.51	-	-	5.12	0.18	0.18	M12	211.6	
	0296	250	200		19.69	31.50	13.78	14.57	0.39	-	-	30.43	0.51	-	-	5.12	0.18	0.18	M12	224.9	
	0362	300	250		19.69	31.50	13.78	14.57	0.39	-	-	30.43	0.51	-	-	5.12	0.18	0.18	M12	235.9	
	0414	350	300		19.69	37.40	14.57	14.57	0.31	-	-	36.34	0.51	-	-	5.31	0.18	0.18	M12	275.6	
	0515	450	350		5	26.38	44.88	14.57	17.32	0.24	8.66	-	43.70	0.59	-	-	5.91	0.18	0.18	M12	476.2
	0675	600	400-500			26.38	44.88	14.57	17.32	0.24	8.66	-	43.70	0.59	-	-	5.91	0.18	0.18	M12	487.2
	0930	800	700		5	49.21	54.33	14.57	43.70	-	-	-	52.95	0.59	-	-	5.91	0.18	0.18	M12	1201.5
	1200	1000	900			49.21	54.33	14.57	43.70	-	-	-	52.95	0.59	-	-	5.91	0.18	0.18	M12	1223.6

600V Class

Diagram	Model CIMR-AU5A □□□□	Max. Applicable Motor Capacity (HP)		Fig.	Dimensions (in.)															Weight (lb)		
		Normal Duty	Heavy Duty		W	H	D	W1	W2	H0	H1	H2	H3	H4	D1	t1	t2	d				
NEMA Type 1	0003	2	1	1	5.51	11.81	5.79	4.80	-	-	10.24	9.76	0.24	1.57	0.06	1.50	0.20	-	M5	7.5		
	0004	3	2		5.51	11.81	5.79	4.80	-	-	10.24	9.76	0.24	1.57	0.06	1.50	0.20	-		7.5		
	0006	5	3		5.51	11.81	6.46	4.80	-	-	10.24	9.76	0.24	1.57	0.06	2.17	0.20	-		8.2		
	0009	7.5	5		5.51	11.81	6.46	4.80	-	-	10.24	9.76	0.24	1.57	0.06	2.17	0.20	-		8.2		
	0011	10	7.5		5.51	11.81	6.57	4.80	-	-	10.24	9.76	0.24	1.57	0.06	2.17	0.20	-		9.0		
	0017	15	10		7.09	13.39	7.36	6.30	-	-	11.81	11.18	0.31	1.57	0.06	2.95	0.20	-		13.2		
	0022	20	15		7.09	13.39	7.36	6.30	-	-	11.81	11.18	0.31	1.57	0.06	2.95	0.20	-		13.2		
	0027	25	20		8.66	15.75	7.76	7.56	-	-	13.78	13.19	0.31	1.97	0.06	3.07	0.20	-		19.2		
	0032	30	25		8.66	15.75	7.76	7.56	-	-	13.78	13.19	0.31	1.97	0.06	3.07	0.20	-		19.2		
	0041	40	30		10.98	20.28	10.16	8.66	0.31	17.72	17.13	0.30	2.56	-	3.94	0.09	0.09	59.5				
	0052	50	40		10.98	20.28	10.16	8.66	0.31	17.72	17.13	0.30	2.56	-	3.94	0.09	0.09	59.5				
	0062	60	50		12.95	28.74	11.14	10.24	0.31	21.65	21.06	0.30	7.09	-	4.33	0.09	0.09	99.2				
	0077	75	60		12.95	28.74	11.14	10.24	0.31	21.65	21.06	0.30	7.09	-	4.33	0.09	0.09	99.2				
	0099	100	75		12.95	28.74	11.14	10.24	0.31	21.65	21.06	0.30	7.09	-	4.33	0.09	0.09	99.2				
	Protected Chassis	0125	125		100	2	17.95	37.80	12.99	12.80	0.31	27.76	26.77	0.49	10.04	-	5.12	0.13		0.13	M10	191.8
		0145	150		125		17.95	37.80	12.99	12.80	0.31	27.76	26.77	0.49	10.04	-	5.12	0.13		0.13	M10	191.8
0192		200	150	19.84	45.98		13.78	14.57	0.31	31.50	30.43	0.51	14.49	-	5.12	0.18	0.18	M12	233.7			
0242		250	200	19.84	45.98		13.78	14.57	0.31	31.50	30.43	0.51	14.49	-	5.12	0.18	0.18	M12	257.9			

Some protected chassis models can be converted to NEMA Type 1 by adding top and bottom covers. An add-on kit is required to do so. The tables below display the resulting dimensions of these models.

240V Class - Converted to NEMA Type 1

Diagram	Model CIMR-AU2A □□□□	Max. Applicable Motor Capacity (HP)		Fig.	Dimensions (in.)															Weight (lb)
		Normal Duty	Heavy Duty		W	H	D	W1	W2	H0	H1	H2	H3	H4	D1	t1	t2	d		
NEMA Type 1	0250	100	75	1	17.95	37.80	12.99	12.80	0.31	27.76	26.77	0.49	10.04	-	5.12	0.13	0.13	M10	183.0	
	0312	125	100		17.95	37.80	12.99	12.80	0.31	27.76	26.77	0.49	10.04	-	5.12	0.13	0.13	M10	194.0	
	0360	150	125		19.84	45.98	13.78	14.57	0.31	31.50	30.43	0.51	14.49	-	5.12	0.18	0.18	M12	238.1	

480V Class - Converted to NEMA Type 1

Diagram	Model CIMR-AU4A □□□□	Max. Applicable Motor Capacity (HP)		Fig.	Dimensions (in.)															Weight (lb)
		Normal Duty	Heavy Duty		W	H	D	W1	W2	H0	H1	H2	H3	H4	D1	t1	t2	d		
NEMA Type 1	0208	150	125	1	17.95	37.80	12.99	12.80	0.31	27.76	26.77	0.49	10.04	-	5.12	0.13	0.13	M10	191.8	
	0250	200	150		19.84	45.98	13.78	14.57	0.31	31.50	30.43	0.51	14.49	-	5.12	0.18	0.18	M12	233.7	
	0296	250	200		19.84	45.98	13.78	14.57	0.31	31.50	30.43	0.51	14.49	-	5.12	0.18	0.18	M12	246.9	
	0362	300	250		19.84	45.98	13.78	14.57	0.31	31.50	30.43	0.51	14.49	-	5.12	0.18	0.18	M12	257.9	

Mechanical Installation Planning

NEMA Type 1 Conduit Bracket Dimensions

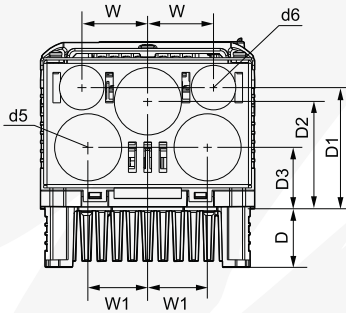


Figure 1

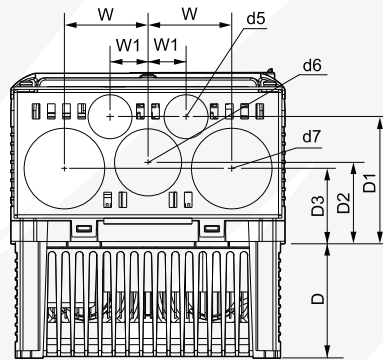


Figure 2

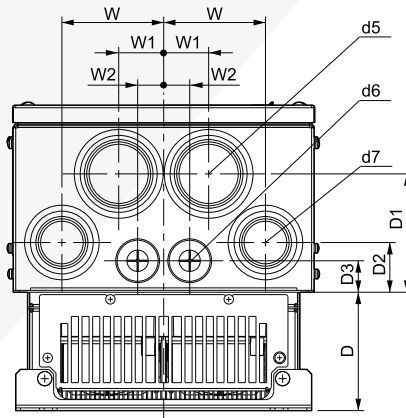


Figure 3

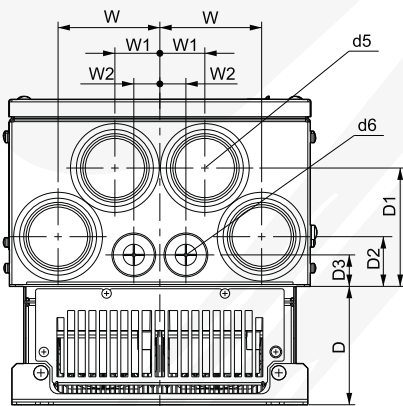


Figure 4

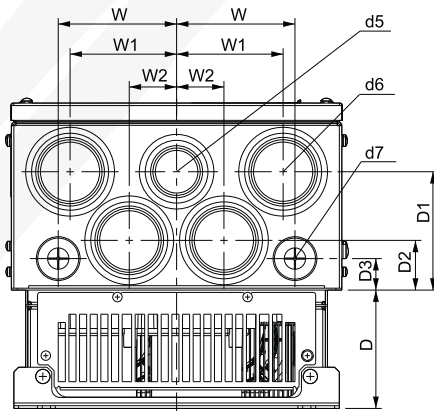


Figure 5

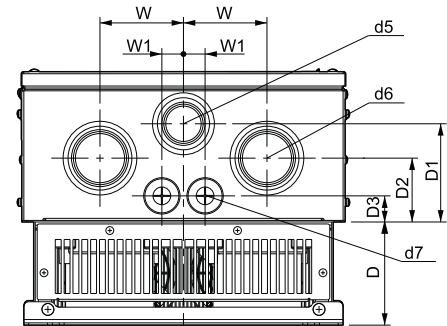


Figure 6

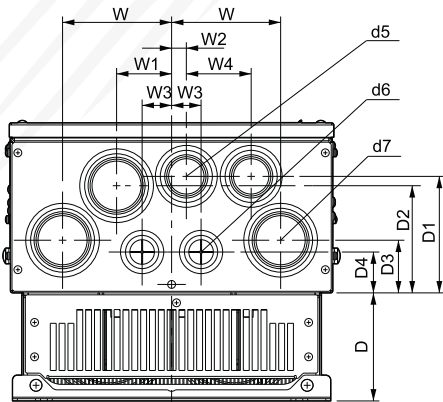


Figure 7

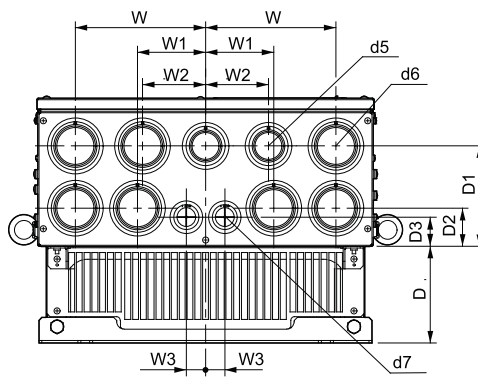


Figure 8

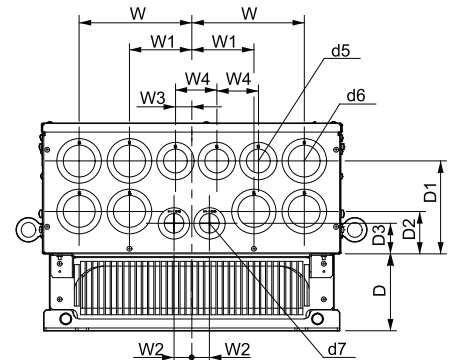


Figure 9

NEMA Type 1 Conduit Bracket Dimensions (continued)

240V Class

Model CIMR-AU2A	Figure	Dimensions (in.)												
		W	D	W1	W2	W3	W4	D1	D2	D3	D4	d5	d6	d7
0004	1	1.7	1.5	1.5	–	–	–	1.6	2.8	3.1	–	0.9	1.4	–
0006		1.7	1.5	1.5	–	–	–	1.6	2.8	3.1	–	0.9	1.4	–
0008		1.7	1.5	1.5	–	–	–	1.6	2.8	3.1	–	–	–	–
0010		1.7	1.5	1.5	–	–	–	1.6	2.8	3.1	–	0.9	1.4	–
0012		1.7	2.2	1.5	–	–	–	1.6	2.8	3.1	–	0.9	1.4	–
0018	2	1.7	2.2	1.5	–	–	–	1.6	2.8	3.1	–	1.4	0.9	1.7
0021		1.7	2.2	1.5	–	–	–	1.6	2.8	3.1	–	1.4	0.9	1.7
0030		1.7	2.2	1.5	–	–	–	1.6	2.8	3.1	–	1.4	0.9	1.7
0040		1	3	2.2	–	–	–	1.9	3.3	2.1	–	1.4	0.9	1.7
0056		1	3	2.2	–	–	–	1.9	3.3	2.1	–	1.4	0.9	1.7
0069		1.1	3.1	2.5	–	–	–	2	3.4	2.2	–	1.4	0.9	1.7
0081		1.1	3.1	2.5	–	–	–	2	3.4	2.2	–	1.4	0.9	1.7
0110	4	3.4	3.9	1.5	0.9	–	–	3.9	1.7	1.0	–	2.4	1.1	–
0138	5	3.9	3.9	3.5	1.6	–	–	3.9	1.7	1.0	–	2.0	2.4	1.1
0169	7	4.4	4.3	2.2	0.6	1.2	2.6	4.7	4.3	2.1	1.6	2.0	1.4	2.4
0211		4.4	4.3	2.2	0.6	1.2	2.6	4.7	4.3	2.1	1.6	2.0	1.4	2.4

480V Class

Model CIMR-AU4A	Figure	Dimensions (in.)												
		W	D	W1	W2	W3	W4	D1	D2	D3	D4	d5	d6	d7
0002	1	1.7	1.5	1.5	–	–	–	1.6	2.8	3.1	–	0.9	1.4	–
0004		1.7	1.5	1.5	–	–	–	1.6	2.8	3.1	–	0.9	1.4	–
0005		1.7	1.5	1.5	–	–	–	1.6	2.8	3.1	–	0.9	1.4	–
0007		1.7	2.2	1.5	–	–	–	1.6	2.8	3.1	–	0.9	1.4	–
0009		1.7	2.2	1.5	–	–	–	1.6	2.8	3.1	–	0.9	1.4	–
0011		1.7	2.2	1.5	–	–	–	1.6	2.8	3.1	–	0.9	1.4	–
0018		1.7	2.2	1.5	–	–	–	1.6	2.8	3.1	–	0.9	1.4	–
0023	2	1	3	2.2	–	–	–	1.9	3.3	2.1	–	1.4	0.9	1.7
0031		1	3	2.2	–	–	–	1.9	3.3	2.1	–	1.4	0.9	1.7
0038		1.1	3.1	2.5	–	–	–	2	3.4	2.2	–	1.4	0.9	1.7
0044	3	1.1	3.1	2.5	–	–	–	2	3.4	2.2	–	1.4	0.9	1.7
0058		3.4	3.9	1.5	0.9	–	–	3.9	1.7	1.0	–	2.4	1.1	2.0
0072		3.5	3.9	1.6	0.9	–	–	3.9	1.7	1.0	–	2.4	1.1	2.0
0088	6	3.3	4.1	0.9	–	–	–	3.9	2.6	1.0	–	2.0	2.4	1.1
0103		3.3	4.1	0.9	–	–	–	3.9	2.6	1.0	–	2.0	2.4	1.1
0139	7	4.4	4.3	2.2	0.6	1.2	2.6	4.7	4.3	2.1	1.6	2.0	1.4	2.4
0165		4.4	4.3	2.2	0.6	1.2	2.6	4.7	4.3	2.1	1.6	2.0	1.4	2.4

600V Class

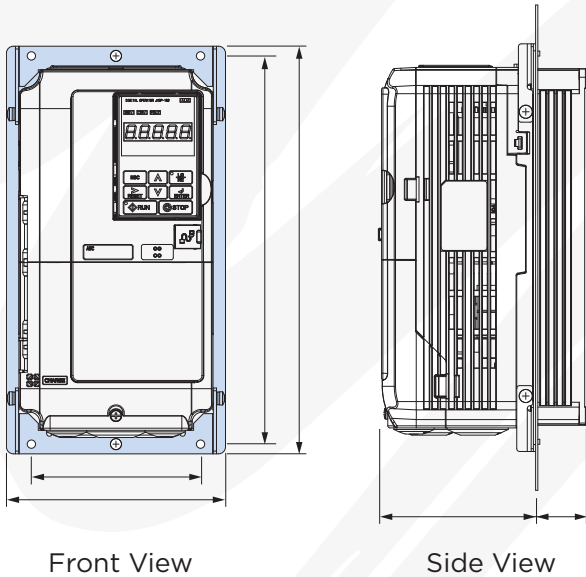
Model CIMR-AU5A	Figure	Dimensions (in.)												
		W	D	W1	W2	W3	W4	D1	D2	D3	D4	d5	d6	d7
0003	1	1.7	1.5	1.5	–	–	–	1.6	2.8	3.1	–	0.9	1.4	–
0004		1.7	1.5	1.5	–	–	–	1.6	2.8	3.1	–	0.9	1.4	–
0006		1.7	2.2	1.5	–	–	–	1.6	2.8	3.1	–	0.9	1.4	–
0009		1.7	2.2	1.5	–	–	–	1.6	2.8	3.1	–	0.9	1.4	–
0011		1.7	2.2	1.5	–	–	–	1.6	2.8	3.1	–	0.9	1.4	–
0017	2	1	3	2.2	–	–	–	1.9	3.3	2.1	–	1.4	0.9	1.7
0022		1	3	2.2	–	–	–	1.9	3.3	2.1	–	1.4	0.9	1.7
0027		1.1	3.1	2.5	–	–	–	2	3.4	2.2	–	1.4	0.9	1.7
0032		1.1	3.1	2.5	–	–	–	2	3.4	2.2	–	1.4	0.9	1.7
0041	3	3.5	3.9	1.6	0.9	–	–	3.9	1.7	1.0	–	2.4	1.1	2.0
0052		3.5	3.9	1.6	0.9	–	–	3.9	1.7	1.0	–	2.4	1.1	2.0
0062	7	4.4	4.3	2.2	0.6	1.2	2.6	4.7	4.3	2.1	1.6	2.0	1.4	2.4
0077		4.4	4.3	2.2	0.6	1.2	2.6	4.7	4.3	2.1	1.6	2.0	1.4	2.4
0099		4.4	4.3	2.2	0.6	1.2	2.6	4.7	4.3	2.1	1.6	2.0	1.4	2.4

Mechanical Installation Planning

External Heatsink

Additional attachments are required for installation of the following models: CIMR-AA2A0004 to 0081, CIMRAA4A0002 to 0044. The final product will be wider and taller than the drive.

Note: Contact Yaskawa for information on attachments for earlier models.



240V Class

Model CIMR-AU2A	Dimension (in.)						Yaskawa Part Number
	W	H	W1	H1	D1	D2	
0004	6.22	11.6	4.8	11	4.29	1.43	100-047-226
0006							
0008							
0010							
0012							
0018	7.8	12.95	6.30	12.4	4.29	2.1	100-047-227
0021							
0030							
0040	9.37	14.96	7.56	14.25	4.41	2.1	100-047-228
0056							
0069							
0081					4.69	3	100-047-229

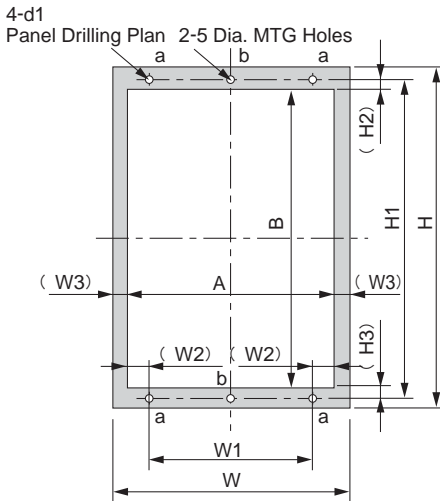
480V Class

Model CIMR-AU4A	Dimension (in.)						Yaskawa Part Number
	W	H	W1	H1	D1	D2	
0002	6.22	11.6	4.8	11	4.29	1.43	100-047-226
0004							
0005							
0007							
0009							
0011	7.8	12.95	6.30	12.4	4.29	2.1	100-047-227
0018							
0023							
0031	9.37	14.96	7.56	14.25	4.41	2.1	100-047-228
0038							
0044							
					4.41	2.89	
					4.69	3	100-047-229

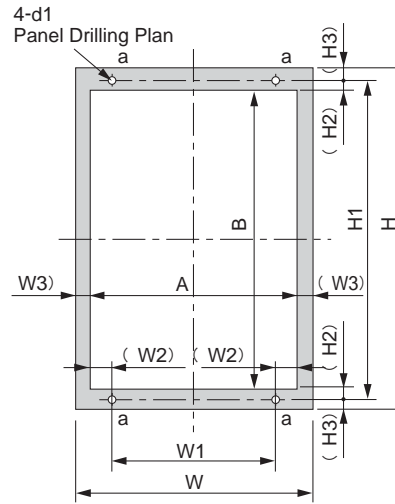
600V Class

Model CIMR-AU5A	Dimension (in.)						Yaskawa Part Number
	W	H	W1	H1	D1	D2	
0003	6.22	11.6	4.8	11	4.29	1.43	100-047-226
0004							
0006							
0009							
0011	7.8	12.95	6.30	12.4	4.29	2.1	100-047-227
0017							
0022							
0027	9.37	14.96	7.56	14.25	4.41	2.1	100-047-228
0032					4.69	3	

Panel Drilling Plan with External Heatsink



Panel Drilling Plan 1



Panel Drilling Plan 2

240V Class

Model CIMR-AU2A	Panel Drilling Plan	Dimensions (in.)										
		W	H	W1	W2	W3	H1	H2	H3	A	B	d1
0004	1	6.22	11.6	4.8	0.35	0.35	11	0.33	0.33	5.5	10.35	M5
0006	1	6.22	11.6	4.8	0.35	0.35	11	0.33	0.33	5.5	10.35	M5
0008	1	6.22	11.6	4.8	0.35	0.35	11	0.33	0.33	5.5	10.35	M5
0010	1	6.22	11.6	4.8	0.35	0.35	11	0.33	0.33	5.5	10.35	M5
0012	1	6.22	11.6	4.8	0.35	0.35	11	0.33	0.33	5.5	10.35	M5
0018	1	6.22	11.6	4.8	0.35	0.35	11	0.33	0.33	5.5	10.35	M5
0021	1	6.22	11.6	4.8	0.35	0.35	11	0.33	0.33	5.5	10.35	M5
0030	1	6.22	11.6	4.8	0.35	0.35	11	0.33	0.33	5.5	10.35	M5
0040	1	6.22	11.6	4.8	0.35	0.35	11	0.33	0.33	5.5	10.35	M5
0056	1	7.8	12.95	6.30	0.39	0.35	12.4	0.69	0.41	7.1	11.3	M5
0069	1	9.37	14.96	7.56	0.55	0.35	14.25	0.51	0.31	8.7	13.4	M6
0081	1	9.37	14.96	7.56	0.55	0.35	14.25	0.51	0.31	8.7	13.4	M6
0110	2	9.84	15.75	7.68	0.77	0.31	15.16	0.31	0.30	9.2	14.5	M6
0138	2	10.8	17.7	8.66	0.77	0.31	17.1	0.31	0.30	10.2	16.5	M6
0169	2	12.8	21.65	10.2	0.96	0.31	21.06	0.31	0.30	12.2	20.4	M6
0211	2	12.8	21.65	10.2	0.96	0.31	21.06	0.31	0.30	12.2	20.4	M6

Mechanical Installation Planning

Panel Drilling Plan (continued)

480V Class

Model CIMR-AU4A	Panel Drilling Plan	Dimensions (in.)										
		W	H	W1	W2	W3	H1	H2	H3	A	B	d1
0002	1	6.22	11.6	4.8	0.35	0.35	11	0.33	0.33	5.5	10.35	M5
0004	1	6.22	11.6	4.8	0.35	0.35	11	0.33	0.33	5.5	10.35	M5
0005	1	6.22	11.6	4.8	0.35	0.35	11	0.33	0.33	5.5	10.35	M5
0007	1	6.22	11.6	4.8	0.35	0.35	11	0.33	0.33	5.5	10.35	M5
0009	1	6.22	11.6	4.8	0.35	0.35	11	0.33	0.33	5.5	10.35	M5
0011	1	6.22	11.6	4.8	0.35	0.35	11	0.33	0.33	5.5	10.35	M5
0018	1	6.22	11.6	4.8	0.35	0.35	11	0.33	0.33	5.5	10.35	M5
0023	1	6.22	11.6	4.8	0.35	0.35	11	0.33	0.33	5.5	10.35	M5
0031	1	7.8	12.95	6.30	0.39	0.35	12.4	0.69	0.41	7.1	11.3	M5
0038	1	7.8	12.95	6.30	0.39	0.35	12.4	0.69	0.41	7.1	11.3	M5
0044	1	9.37	14.96	7.56	0.55	0.35	14.25	0.51	0.31	8.7	13.4	M6
0058	2	9.84	15.75	7.68	0.77	0.31	15.16	0.31	0.30	9.2	14.5	M6
0072	2	10.8	17.7	8.66	0.77	0.31	17.1	0.31	0.30	10.2	16.5	M6
0088	2	12.8	20.08	10.2	0.96	0.31	19.5	0.31	0.30	12.2	18.9	M6
0103	2	12.8	20.08	10.2	0.96	0.31	19.5	0.31	0.30	12.2	18.9	M6
0139	2	12.8	21.65	10.2	0.96	0.31	21.06	0.31	0.30	12.2	20.4	M6
0165	2	12.8	21.65	10.2	0.96	0.31	21.06	0.31	0.30	12.2	20.4	M6

600V Class

Model CIMR-AU5A	Panel Drilling Plan	Dimensions (in.)										
		W	H	W1	W2	W3	H1	H2	H3	A	B	d1
0003	1	6.22	11.6	4.8	0.35	0.35	11	0.33	0.33	5.5	10.35	M5
0004	1	6.22	11.6	4.8	0.35	0.35	11	0.33	0.33	5.5	10.35	M5
0006	1	6.22	11.6	4.8	0.35	0.35	11	0.33	0.33	5.5	10.35	M5
0009	1	6.22	11.6	4.8	0.35	0.35	11	0.33	0.33	5.5	10.35	M5
0009	1	6.22	11.6	4.8	0.35	0.35	11	0.33	0.33	5.5	10.35	M5
0011	1	6.22	11.6	4.8	0.35	0.35	11	0.33	0.33	5.5	10.35	M5
0017	1	7.8	12.95	6.30	0.39	0.35	12.4	0.69	0.41	7.1	11.3	M5
0022	1	7.8	12.95	6.30	0.39	0.35	12.4	0.69	0.41	7.1	11.3	M5
0027	1	9.37	14.96	7.56	0.55	0.35	14.25	0.51	0.31	8.7	13.4	M6
0032	1	9.37	14.96	7.56	0.55	0.35	14.25	0.51	0.31	8.7	13.4	M6
0041	2	10.8	17.7	8.66	0.77	0.31	17.1	0.31	0.30	10.2	16.5	M6
0052	2	10.8	17.7	8.66	0.77	0.31	17.1	0.31	0.30	10.2	16.5	M6
0062	2	12.8	21.65	10.2	0.96	0.31	21.06	0.31	0.30	12.2	20.4	M6
0077	2	12.8	21.65	10.2	0.96	0.31	21.06	0.31	0.30	12.2	20.4	M6
0099	2	12.8	21.65	10.2	0.96	0.31	21.06	0.31	0.30	12.2	20.4	M6